

F.NO. 3-1/2008-NCFC – E&S
GOVERNMENT OF INDIA
MINISTRY OF AGRICULTURE
DEPARTMENT OF AGRICULTURE & COOPERATION
(NATIONAL CROP FORECASTING CENTRE)

Room no. 344-A, Krishi Bhavan, New Delhi
Dated, the 17th July, 2008

**SUBJECT: MINUTES OF THE MEETING OF THE CROP WEATHER WATCH GROUP HELD
ON 11.07.2008.**

Presentations in the meeting

Rainfall & Temperature (As reported by India Meteorological Department, (IMD))

Long Range Forecast for the 2008 Southwest Monsoon

i) South-West Monsoon Season Rainfall

IMD's long range forecast update for the 2008 south-west monsoon season (June to September) is that the rainfall for the country as a whole is likely to be Near Normal. Quantitatively, monsoon season rainfall is likely to be 100% of the long period average with a model error of $\pm 4\%$. The Long period average rainfall over the country as a whole for the period 1941-1990 is 89 cm.

ii) July rainfall

Rainfall over the country as a whole in the month of July 2008 is likely to be 98% of its LPA with a model error of $\pm 9\%$.

iii) Rainfall over broad geographical regions

Over the four broad geographical regions of the country, rainfall for the 2008 South-West Monsoon Season is likely to be 96% of its LPA over North-West India, 101% of its LPA over North-East India, 101% of its LPA over Central India and 98% of its LPA over South Peninsula, all with a model error of $\pm 8\%$.

Monsoon Watch

- Southwest monsoon has further advanced into the remaining parts of Rajasthan on 10th July 08, thus covering the entire country about 5 days earlier than the normal schedule.

Monsoon Rainfall (June - September) during the week ending on 09th July, 2008

- **Widespread/ fairly widespread rain/thundershower** occurred over East Uttar Pradesh, Bihar, Sub-Himalayan West Bengal & Sikkim, Arunachal Pradesh and Assam & Meghalaya during first half of the week and decreased thereafter.

- The **rainfall was isolated to scattered** over Orissa, Gangetic West Bengal and Chhattisgarh during first half and became widespread/ fairly widespread during second half of the week. However, **widespread/fairly widespread** rainfall occurred over Nagaland, Manipur, Mizoram & Tripura and Jharkhand during many days of the week.
- **Fairly widespread rainfall** occurred over Uttarakhand and West Uttar Pradesh during many days and over Haryana, Chandigarh & Delhi, Himachal Pradesh and East Rajasthan during second half of the week.
- **Widespread/ fairly widespread rain/thundershower** occurred over Konkan & Goa and Coastal Karnataka during the week and over Kerala during second half of the week
- **Isolated to scattered rain/thundershower** occurred over remaining subdivisions of the country during many days of the week. Rainfall was scanty over south India during the week.
- Out of 36 meteorological sub-divisions, **rainfall during the week** was excess / normal in 14 sub-divisions and deficient / scanty in 22 sub-divisions met sub-division.
- Out of 36 meteorological sub-divisions, **cumulative rainfall (1st June to 09th July, 2008)** was in excess / normal in 23 and deficient / scanty in 13 sub-divisions.

Table-1: Weekly and Cumulative Rainfall in four regions of the country ¹

Region	Week Ending (09.07.08)				Cumulative (01.06.08 to 09.07.08)			
	(in mm)		Devi. (%)	Cat.	(in mm)		Deviation (%)	Category
	Actual	Normal			Actual	Normal		
North-West India	57.0	41.3	38	E	219.9	117.3	87	E
Central India	47.0	76.3	-38	D	273.0	259.7	5	N
South Peninsular India	12.4	50.4	-75	S	159.9	222.2	-28	D
North-East India	95.6	96.5	-1	N	486.7	480.6	1	N
Country as a whole	51.0	63.7	-20	D	268.5	243.8	10	N

E

E: Excess, N: Normal, D: Deficient, S: Scanty, NR: No Rain.

Source: India Meteorological Department, New Delhi

1. North-west India - Uttar Pradesh, Rajasthan, Haryana, Chandigarh and Delhi, Punjab, Uttaranchal, Himachal Pradesh, and Jammu and Kashmir.
Central India - Madhya Pradesh, Chhattisgarh, Maharashtra and Gujarat

South Peninsula - Andhra Pradesh, Karnataka, Tamil Nadu & Pondicherry, Kerala and Lakshadweep.

North-east India - Bihar, Jharkhand, Orissa, West Bengal, Sikkim, Assam, Arunachal Pradesh, Meghalaya, Nagaland, Manipur, Mizoram, Tripura, and Andaman and Nicobar Islands.

Weather Outlook / Forecast for the period 11th – 16th July, 2008 by IMD

Outlook for the Week Ending 16th July, 2008

- *Subdued rainfall activity is likely over Central India.*
- *Subdued rainfall activity over South India is likely to continue.*
- *Fairly widespread rainfall with isolated heavy to very heavy falls is likely over Northeastern states and Gangetic plains.*

Warning:

- Isolated heavy to very heavy rainfall is likely over North Konkan, West Madhya Pradesh, Gujarat Region, East & Southwest Rajasthan, Assam & Meghalaya and Arunachal Pradesh.

Zone-wise Weather Forecast:

North-West India (J&K, HP, Uttaranchal, Punjab, Haryana, Delhi, West UP)

- *Rain/thundershowers are likely at a few places over Himachal Pradesh, Uttarakhand, West Uttar Pradesh, Punjab and Haryana, Chandigarh & Delhi during next 24 hours and increase thereafter. Isolated rain/thundershowers are likely over the rest region.*

East India (East UP, Bihar, Jharkhand, West Bengal & Sikkim, Orissa)

- *Rain/thundershowers are likely at many places over Sub-Himalayan West Bengal & Sikkim.*
- *Rain/thundershower are likely at isolated places over East UP and Bihar during next 24 hours and increase thereafter.*
- *Rain/thundershower are likely at a few/isolated places over the rest region.*

North-East India (Arunachal Pradesh, NMM&T, Assam & Meghalaya)

- *Rain/thundershowers are likely at many places over the region.*

South India (Tamil Nadu, AP, Kerala, Karnataka, Andaman & Nicobar Islands, Lakshadweep)

- *Rain/thundershowers are likely at many places over Coastal Karnataka, Kerala and Andaman & Nicobar Islands.*

Rain/thundershowers are likely at a few places over North Coastal Andhra Pradesh and Lakshadweep and isolated over the rest region.

West India (Maharashtra, Other than Vidarbha, Gujarat, Rajasthan)

- *Rain/thundershowers are likely at many places over Konkan & Goa, East & Southwest Rajasthan and Gujarat State during next 48 hours and decrease thereafter.*
- *Rain/thundershowers are likely at a few places over Northwest Rajasthan and North Madhya Maharashtra. Rain/thundershowers are likely at isolated places over the rest region.*

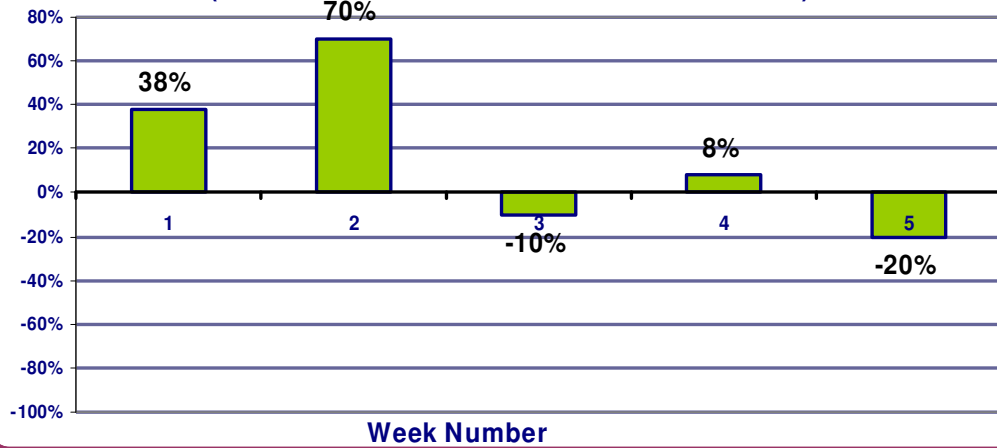
Central India (MP, Chhattisgarh, Vidarbha)

- *Rain/thundershowers are likely at many places over West Madhya Pradesh. Rain/thundershowers are likely at a few places over East MP, Vidarbha, Chhattisgarh during next 24 hrs and isolated thereafter.*

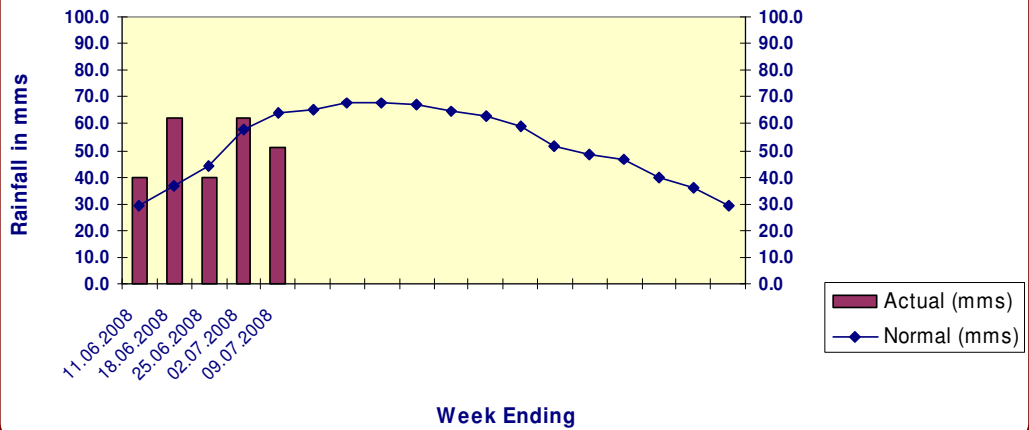


Weekly Percentage Rainfall Deviation from Normal(LPA)- All India

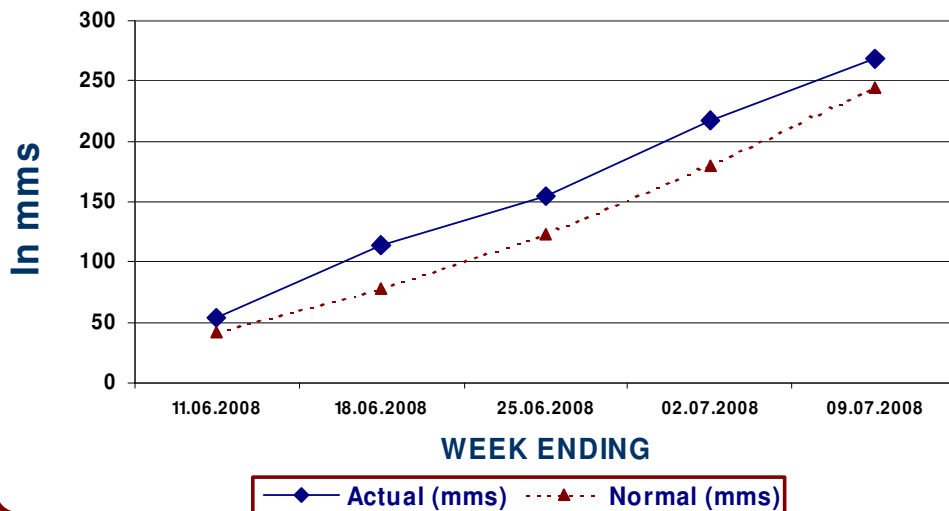
(Monsoon 2008 - from 01.06.2008 to 09.07.2008)



Weekly Rainfall Distribution in Monsoon 2008 - All India



Trend of All India Cumulative Rainfall Actual vs Normal in Monsoon 2008



Reservoir Status (For the week ending on 10.07.2008)

- The **Central Water Commission** monitors the live storage of **81** important/major reservoirs, having Full Reservoir Level (FRL) of **151.77** billion cubic meters (BCM), which is about 72% of total reservoir capacity in the country.
- Water stock in 81 major reservoirs increased to 38.44 BCM. Current storage is more than the last year's position of 56.30 BCM and the average of last 10 year's storage of 32.08 BCM.

Table – 2: For 81 major reservoirs of the country

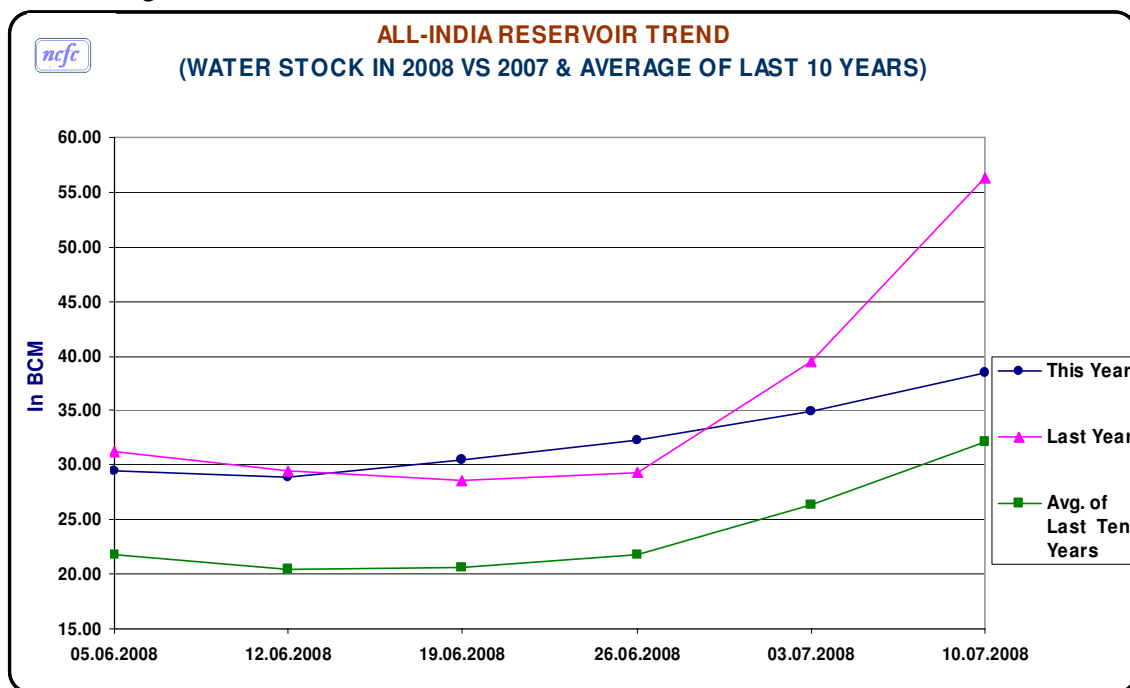
Period	Current Year's Storage as % of FRL*	Current Year's storage as % of last year	Current year as a % of 10 years average level
Current Week	25	68	120
Last Week	23	88	132

The percentage to live capacity at FRL was 37% on 10/07/2007, 30% on 10/07/2006, 25% on 10/07/2005 and 19% on 10/07/2004 .

* Live storage as % to Full Reservoir Level (FRL) of 151.77 Billion Cub. Mts.(BCM)

Source: CWC

- There were 53 reservoirs having storage more than 80%, 13 reservoirs having storage between 50% to 80% of Normal Storage and 7 reservoirs having storage between 30% to 50% of Normal Storage.
- There were five reservoirs namely Dantiwada (Guj), Sholayar (TN), Upper Kolab (Ori), Jhakam (Raj) and Upper Indravati (Ori) having storage below 30% of normal storage and three reservoirs namely Sriramsagar (AP), Bhima (Ujjani) and Yeldari (Maha) having no live storage.



Source: Central Water Commission

Fertilizer Position:

Table – 3: Requirement, Availability, Sales and Stock position of Major Fertilizers Urea, DAP and MOP during 1st April to 08th July, 2008

(in '000 Tonnes)

<i>Availability / Sale / Closing Stock</i>	<i>Urea</i>	<i>DAP</i>	<i>MOP</i>	<i>Complex</i>
<i>Requirement</i>	<i>9032</i>	<i>2819</i>	<i>1088</i>	<i>3116</i>
<i>Availability during 1st April to 08th July, 08</i>	<i>6803</i>	<i>2114</i>	<i>953</i>	<i>1380</i>
<i>Sales during 1st April to 08th July, 08</i>	<i>4440</i>	<i>1869</i>	<i>850</i>	<i>1221</i>
<i>Closing Stock as on 08.07.2008</i>	<i>2363</i>	<i>245</i>	<i>103</i>	<i>159</i>

Source: Fertilizer Division (DAC) / Deptt. of Fertilizer

Pest & Diseases:

- The incidence of pest & diseases generally remained below Threshold Level for most of the crops.
- No shortage of Chemical / Bio-pesticides was reported from any State / UT.

Table:4

All India Crop Situation - Kharif (2008-09) as on 11-07-2008							
Crop Name	Normal Area	(In lakh hectares)					
		Area sown reported			Change vis-à-vis prev. year		Remarks
		This Year	% of Normal	Last Year	Absolute	Percentage	
Changes in major States (abs. %)							
Rice	391.17	92.38	23.6	86.90	5.5	6.3	Ass(-0.6, -11.0), Chhat (+1.6, +12.0), Guj (-0.5, -40.2), Har(+2.1, +58.4), Jhar (-1.2, -36.6), MP (+0.8, +33.2), Pun (+0.3, +1.4), Ori (-0.2, -1.2), TN (+0.5,+77.8),UP (+2.5, +35.6) , WB (+0.3, +8.8)
Jowar	42.08	12.12	28.8	17.19	-5.1	-29.5	AP (-1.0, -81.3), Guj (+0.3, +100.0), Kar (-0.9, -33.5), MP (-0.5, -21.2), Maha(-6.6, -77.8), Raj (+3.0, +252.1), UP (+0.3, +74.3)
Bajra	91.81	37.37	40.7	25.36	12.0	47.4	Guj (-2.3, -61.2), Har (+4.1, +238.2), Kar (-2.0, -80.8), MP (+0.5, +234.8), Maha (-6.9, -97.2), Raj (+17.6, +183.3) , UP (+1.1, +1614.3)
Maize	63.71	33.71	52.9	31.02	2.7	8.7	AP (-2.0, -59.5), Chhat (+0.4, +330.8), Guj (-0.9, -49.5), Kar (-2.1, -32.1), MP (+1.2, +32.1), Maha (-3.0, -81.9), Raj (+5.5, +360.8), UP (+4.2, +350.4)
Total Coarse Cereals	226.54	87.35	38.6	78.34	9.0	11.5	AP (-3.2, -60.9), Chhat(+0.5, +407.7), Guj (-3.1, -53.6), Har (+4.3, +181.5), Kar (-5.3, -42.8), MP (+1.4, +22.4), Maha (-16.7, -85.0), Raj (+26.1,+211.7), UP (+4.6, +174.9)
Total Cereals	617.71	179.73	29.1	165.24	14.5	8.8	
Tur	34.60	7.20	20.8	9.76	-2.6	-26.2	AP (-1.2, -64.0), Guj (-0.3, -100.0), Kar (-1.2, -55.3), Maha (-1.7, -41.4), UP(+1.6, +100.0)
Urad	25.31	5.49	21.7	5.48	0.0	0.2	AP (-0.4, -69.1), Kar (-0.4, -47.7), MP (+0.9, +123.2), Maha (-1.5, -66.1), Raj (+0.6 +921.7), UP (+0.7, +106.5)
Moong	26.16	10.09	38.6	10.79	-0.7	-6.5	AP (-1.3, -62.4), Kar (-2.0, -61.7), Maha (-1.9, -61.0), Raj (+4.6, +392.7), UP (-0.3, -64.0)
Others	22.64	8.07	35.6	2.64	5.4	205.9	
Total Pulses	108.71	30.85	28.4	28.67	2.2	7.6	AP (-2.9, -63.8), Guj (-0.8, -100.0), Har (+0.3, +108.0), Kar (-3.7, -54.1), MP (+1.1, +52.9), Maha (-5.2, -53.4), Ori (+0.7, +241.4) Raj (+10.1, +439.7), TN (+0.4, +100.1), UP (+1.9, +168.8)
Total Foodgrains	726.42	210.58	29.0	193.91	16.7	8.6	
Groundnut	53.54	24.56	45.9	26.02	-1.5	-5.6	AP (-2.0, -53.6), Guj (+0.9, +5.9), Kar (-1.4, -63.5), Maha (-0.8, -42.5), Raj (+1.4, +77.1)
Soyabean	72.54	53.99	74.4	43.92	10.1	22.9	AP (-0.3, -28.7), Kar (+0.4, +31.8), MP (+12.3, +61.1), Maha (-6.6, -36.6), Raj (+4.2, +159.0)
Sunflower	7.59	1.27	16.7	3.64	-2.4	-65.1	AP (-0.3, -59.2), Kar (-1.8, -64.6), Maha (-0.3, -96.3)
Sesamum	14.48	5.60	38.7	5.17	0.4	8.3	AP (-0.3, -47.8), Guj (-1.0, -53.4), Kar (-0.3, -40.0), Maha (-0.5, -86.0), Raj (+2.0, +442.2), UP (+0.3, +1133.3)
Niger	3.83	0.13	3.4	0.27	-0.1	-51.9	
Castor	7.01	0.56	8.0	1.85	-1.3	-69.7	
Total Oilseed (Nine)	158.97	86.12	54.2	80.86	5.3	6.5	AP (-4.0, -55.3), Chhat (+0.2, +22.2), Guj (-0.5, -3.1), Kar (-3.2, -44.2), MP (+12.7 +59.4), Maha (-8.3, -39.8), Raj (+7.6, +157.2), UP (+0.6, +237.5)
Cotton	83.73	39.17	46.8	63.38	-24.2	-38.2	AP (-2.8, -31.8), Guj (-3.9, -31.3), Har (-0.7, -13.5), MP (+1.0, +100), Maha (-15.7, -59.9), Raj (-1.7, -48.3)
Sugarcane	41.47	43.19	104.1	52.82	-9.6	-18.2	AP (-1.0, -41.3), Bih (+0.4, +12.7), Har (-0.3, -16.7), Kar (-0.4, -14.0), Maha(-3.9, -35.7), Pun (-0.3, -21.5), TN (-0.3, -7.3), UP (-3.3, -15.0),
Jute	8.24	8.66	105.1	7.03	1.6	23.2	Bih (+0.3, +29.3), WB (+1.1, +21.6)
All- Crops	1018.83	387.72	38.1	398.00	-10.28	-2.6	

Source: Crops & TMOP Divisions, DAC

Price Situation of Agricultural Commodities as submitted by the Department of Consumer Affairs

Inflation

The all-commodity inflation rate based on Wholesale Price Index (WPI) on a point to point basis for the week ending 28.06.2008 **increased** by 0.26 percentage points to 11.89% from the previous week level of 11.63%. The inflation rate was 4.42% during the corresponding period last year.

The inflation rate in respect of (a) Primary articles group **increased** by 0.30% to 10.84%, (b) Manufactured products group by 0.36% to 10.64% followed by (c) Fuel, power, light and lubricant group by 0.03% to 16.27%. The share of these three groups in inflation during the week ending 28.06.2008 stood in the order of 20.98%, 49.64% and 29.46%.

Procurement :

Table – 5: Progressive procurement of Wheat as on 10.07.2008 (lakh tonnes)

State	Total procurement in marketing season 2007-08 (April - March)	Progressive Procurement as on 10.07.2008	
		In Marketing season 2008-2009	In Marketing season 2007-2008
Punjab	67.81	99.39	67.57
Haryana	33.50	52.31	33.46
Uttar Pradesh	5.46	31.19	5.36
Madhya Pradesh	0.57	23.37	0.57
Rajasthan	3.83	9.35	3.83
All-India	111.28	225.32	110.90

Table – 6: Progressive procurement of Rice as on 10.07.2008 (lakh tonnes)

State	Total procurement in marketing season 2006-07 (Oct. – Sept.)	Progressive Procurement as on 10.07.2008	
		In Marketing season 2007-2008	In Marketing season 2006-2007
Andhra Pradesh	53.28	63.25	51.85
Chhattisgarh	28.65	29.61	25.20
Haryana	17.77	15.72	17.72
Kerala	1.51	1.68	1.51
Maharashtra	0.97	1.45	0.89
Orissa	20.02	21.86	18.90
Punjab	78.29	78.65	78.20
Tamil Nadu	10.77	7.81	10.73
Uttar Pradesh	25.59	27.75	25.49
Uttaranchal	1.76	1.45	1.12
West Bengal	6.42	8.63	5.72
All-India	251.07	264.53	243.26